

About the project

The Upper Alde and Ore Estuary Embankment Improvement Project is Phase 1 of the Alde and Ore Estuary Plan. Its goal is to upgrade river walls, reducing flood risk to towns, villages, farmland, infrastructure and wildlife habitats. This newsletter provides an update since July 2024. Progress updates will soon be available on the Water Management Alliance (WMA) and The Alde & Ore Estuary Trust (AOET) websites.

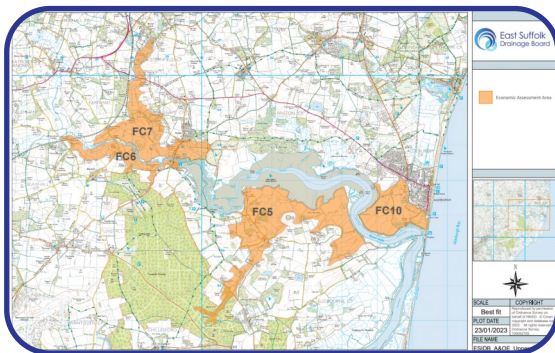
What's Been Happening

Over the past eight months, efforts have focused on design work and delivery preparations. In November 2024, East Suffolk Water Management Board (ESWMB) assessed draft designs, revealing significant cost increases. Since December 2024 ESWMB, AOET, AOCF and Environment Agency (EA) have reviewed the project costs and agreed on a way forward to still deliver maximum outcomes for the funds available—to focus on flood defence construction at Flood Cells 06 (Snape Maltings) and 07 (Snape Village). The AOET have secured funds to close the remaining funding gap relating to FC06 and 07 ensuring we have a full funding package in place. The EA is evaluating this scope change for approval.

Programme

The new construction programme dates are;

FC06 Maltings	October 2025 – Summer 2026 (East of Snape bridge) Spring 2026 – Summer 2026 (West of bridge)
FC07 Snape Village	September 2025 (new soke dyke) Sept / Oct 2025 advance enviro. enhancement April 2026 - Construction material import Spring 2027 to end October 2027 (embankment)



Where

This phase of works covers the four Upper Alde and Ore Estuary Flood Cells (FC). See map above. These include Snape Maltings (FC06) and Snape Village (FC07) initially and then subject to further fund raising Aldeburgh Town Marsh (FC10) and Iken (FC05).

Lower Estuary

ESWMB is developing plans to address the Lower Estuary, while consulting with the AOCF and the AOET. The AOET is funding ground investigation work, which we believe could alter our designs to produce significant cost savings. This has to be done before we can submit an Outline Business Case to the EA. The AOET is simultaneously working on a robust strategic funding plan for the community which will include possible local and central government funding, and we hope to have this ready by the end of summer 2025.



Environmental mitigation work at Snape Maltings. February 2025. Photo Credits WMA

Start Date subject to ongoing fund raising

FC10 Aldeburgh	Spring 2027 to end October 2028
FC05 Iken	Spring 2028 to end October 2031

CONTACT US

Water Management Alliance, Pierpoint House, 28 Horsley's Fields, King's Lynn, Norfolk, PE30 5DD | t: 01553 819600 | e: info@wlma.org.uk | www.wlma.org.uk

FOLLOW US

  @WaterManagementAlliance

    @the_WMA

Other Statutory Permits

Footpath diversions will be phased with each Flood Cell work programme: FC06 (Oct 2025–Summer 2026) and FC07 (Oct 2025 for 3–4 weeks, then Spring–Autumn 2027). We are consulting SCC Highways/Bridges to address risks at Snape Bridge.

A bespoke waste licence from the Environment Agency is essential for importing construction materials for FC06 and FC07. This application will follow the Flood Risk Activity Permit (FRAP) submission, with a decision expected later in 2025. We are working closely with the Environment Agency to prioritise approval.

Design

FC06 and FC07 designs are advanced enough to begin tendering soon, with refinements planned before October 2025. These designs will form part of the FRAP submission, with potential adjustments after approval.

Designs are being shared with communities, landowners, and partners.

Project Costs

Costs were reassessed in November 2024 and further updates will follow tendering. A final cost review will be conducted before construction, with findings shared with ESWMB and the AOET.

Ecology

A bespoke approach is needed to manage Water Vole mitigation across all flood cells and requires a licence from Natural England. We've worked with specialists and will soon submit our final application. Habitat enhancements in FC06 and FC07 are ongoing, with further work planned.



Water Vole
Photo credit -
KreynPhotography



Marsh Harrier
Photo credit -
nieudacza



Photo credit - Nigel
Harris



Redshank
Photo credit - Jordan
Yates



Common Snipe
Photo credit -
CreativeNature_nl

Contact us

Get involved

This information is to let you know about the vital work we are doing in your community. We are happy to come along to community groups and residential associations to explain more about the work. Please contact us if you would like to discuss this in more detail. We will keep you up to date with any further developments.



Pete Roberts

Upper Alde & Ore Project Engineering Delivery Manager

E: pete.roberts@wlma.org.uk | www.wlma.org.uk |

T: 01553 819600



Matilda McNair

trustcommunications@aoetrust.org | www.aoetrust.org

The Alde & Ore Estuary Trust: *Funding the whole estuary embankment improvement works*



Alison Andrews

aldeblackburn@aol.com | www.aocp.co.uk

Alde & Ore Community Partnership

